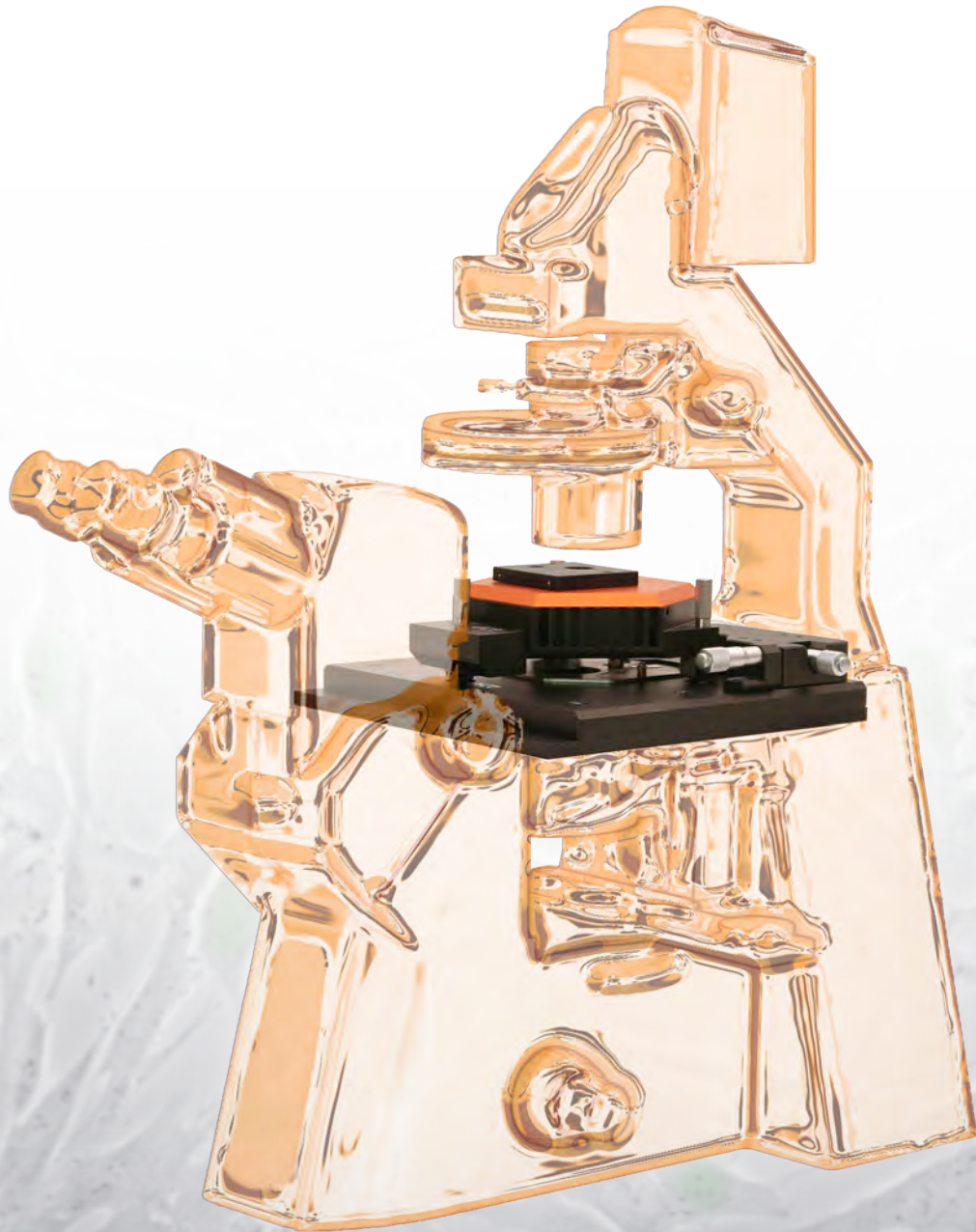
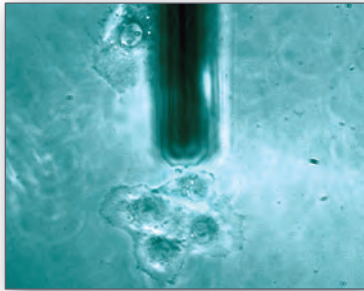




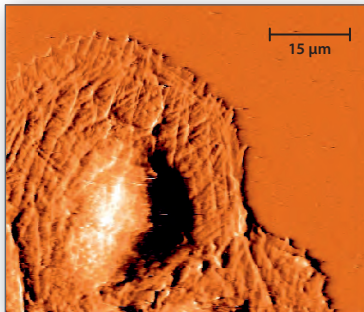
Nanosurf FlexAFM Inverted Microscope Option

The Perfect Fusion of Scanning Probe and
Inverted Microscopy

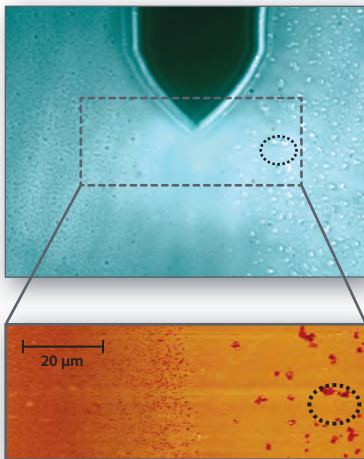




Phase contrast image of the inverted microscope showing living Rat-2 cells and the cantilever of the FlexAFM.



AFM image of living Rat-2 fibroblast cells showing details of the cell's cytoskeleton discernible through the cell membrane.



Phase contrast (top) and AFM image (bottom) of coated glass. The grain-like structures in the optical image (dotted oval) correspond to holes in the coating. They provide an elegant way to determine the thickness of the coating layer by AFM.

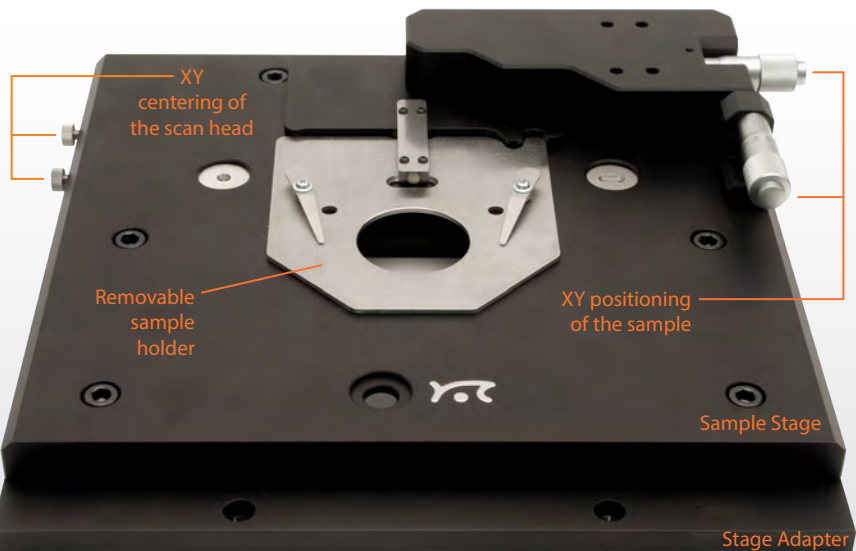
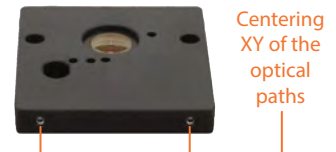
Easily combine AFM with traditional microscopic techniques:

- Adapters for Zeiss Axiovert/Axio Observer, Olympus IX2, Nikon Eclipse Ti, and Leica DMI series. Other inverted microscope makes and types upon request.
- Intuitive operation thanks to an identical orientation of the AFM image and the inverted microscope's optical field of view.
- Centering of the cantilever in the optical field of view by independent movement of the AFM scan head in X and Y (1 mm travel parallel to each axis).
- Alignment chip technology that eliminates the need for re-centering of the cantilever in the optical image after cantilever exchange.
- A sample positioning range of 12 mm in X and Y.
- A sample holder that can accommodate microscope slides as well as Petri dishes and other transparent samples.
- The possibility to use high numerical aperture lenses in combination with cover slip bottom Petri dishes.

Inverted Microscope Requirements

- A 10x and/or 20x objective lens.
- A long working distance condenser (65 mm working distance or more).
- No inverted microscope sample stage required (is replaced by the FlexAFM Inverted Microscope Option to ensure measurement stability and cost reduction in case a new inverted microscope has to be purchased).

FlexAFM Illumination Correction Optics can be directly mounted onto your FlexAFM scan head to enable phase contrast imaging in the presence of the FlexAFM scan head. The optics allow correct centering of the optical paths of the FlexAFM and the condenser of the inverted microscope.



The FlexAFM Inverted Microscope Option consists of the universal Sample Stage, a microscope-specific Stage Adapter, and the FlexAFM Illumination Correction Optics (see above).



Nanosurf AG
Gräubernstrasse 12-14
4410 Liestal
Switzerland
+41 61 927 47 47 (phone)
+41 61 927 47 00 (fax)
www.nanosurf.com
info@nanosurf.com

Nanosurf GmbH
Rheinstrasse 5
63225 Langen
Germany
+49 6103 202 7163 (phone)
+49 6103 202 7182 (fax)
www.nanosurf.de
info@nanosurf.de

Nanosurf Inc.
999 Broadway, Suite 205
Saugus, MA 01906
United States of America
781 549 7361 (phone)
781 549 7366 (fax)
www.nanosurf.com
info@nanosurf.com

Nanosurf 中国中心
Nanosurf China
上海市天宝路578号 (200086)
飘鹰世纪大厦703室, 中国
+86 21 5512 7698 (电话)
+86 21 5512 7698 (传真)
www.nanosurf.com
info@nanosurf.com