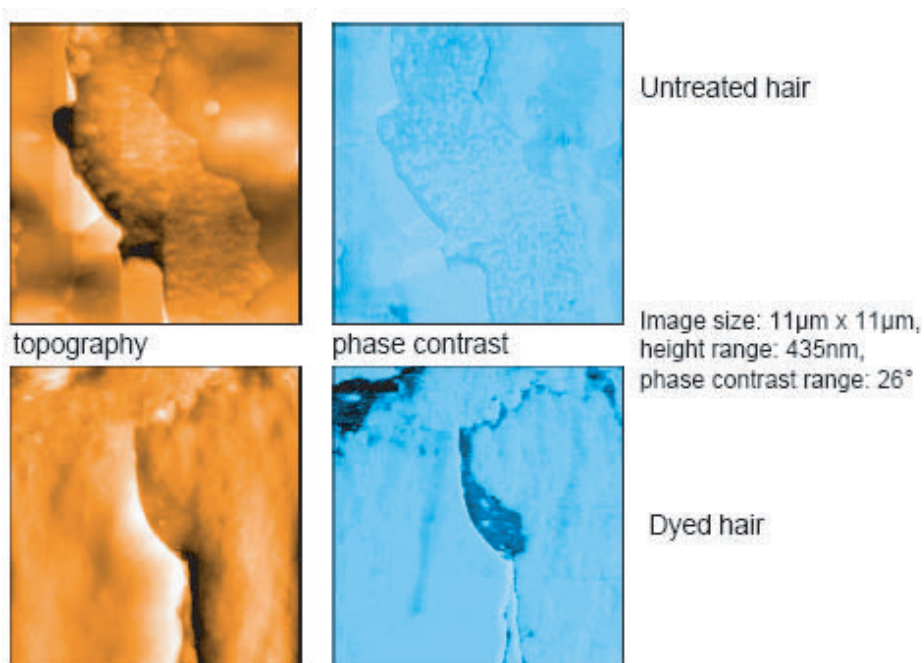


Hair treatment

Nanosurf® AFM Application Note

Hair treatment cause changes in the surface properties of the hair on specific locations. These changes are clearly visible in phase contrast measurements. The images on the left show a measurement on an untreated hair, with the hair running from left to right. No structures are visible in the phase image. The images on the left show a coloured hair. The locations where the hair surface was changed are clearly visible.



DFM head. The phase mode images were obtained with the modeExtension option. The X-Y table option was used to facilitate positioning of the tip with respect to the hair.